

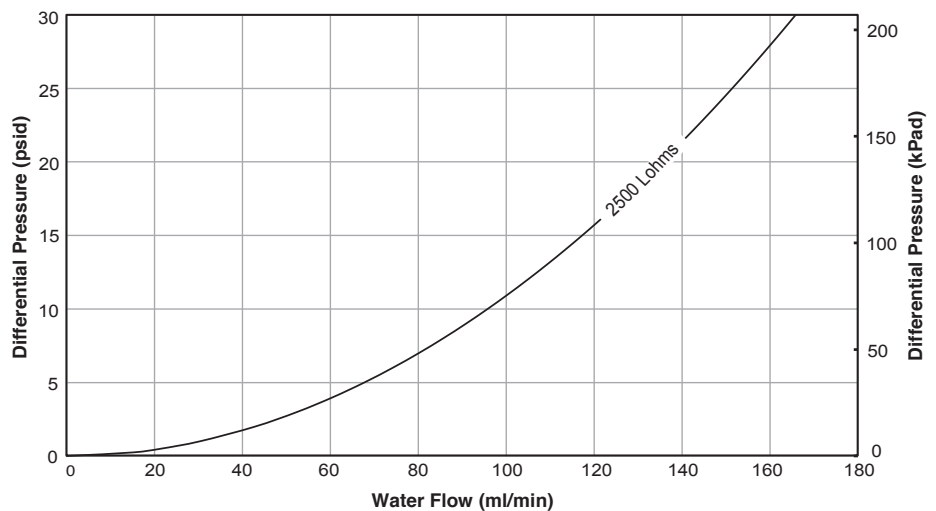
LFN SERIES 2-WAY MICRO INERT SOLENOID VALVE

The Lee Company's LFN Series Micro Inert Solenoid Valve is a chemically inert, isolation style valve with extremely low internal volume. Available as a 2-way normally closed design, the valve contains a diaphragm seal that isolates the fluid from the inner details and provides consistent reliable switching performance in the smallest footprint possible.

The LFN Series valve is generally used in medical and scientific applications, in markets such as in vitro diagnostics, human genomics, biotechnology, environmental analyzers and other OEM devices. Each valve is 100% functionally tested for performance and designed using materials that ensure consistent, long-term performance.

Performance parameters can be optimized to meet specific application requirements. The Lee Company also offers an array of standard manifolds for testing, as well as custom designed manifold configurations for production. Contact your Lee Sales Engineer for additional technical assistance and application information.

- Chemically inert
- Compact size
- Light weight: less than 6 grams
- Zero dead volume
- Low internal volume: 9 μ L
- Bi-directional flow
- Style: flange mount
- Flow capacity: 2500 Lohms* (165 mL/min at 30 psid; Ref. Cv = 0.008)
- Low power consumption: 900 mW



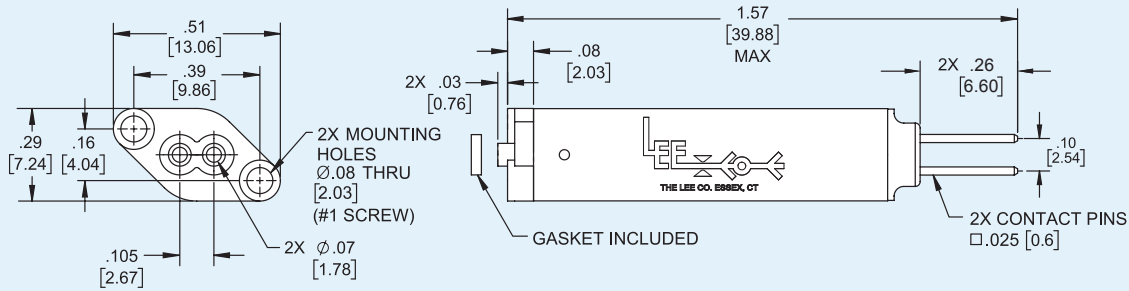
* The Lohm is a measure of flow resistance. Additional information can be found at www.theleeco.com.

PART NUMBER	OPERATING VOLTAGE (Vdc)	FLOW CAPACITY ON WATER AT 70°F (21°C)	OPERATING PRESSURE (psig)	WETTED MATERIALS ¹
LFNA1250125H	12	2500 Lohms (165 mL/min at 30 psid; Ref. Cv = 0.008)	Vac - 30	FKM/PEEK
LFNA2450125H	24		Vac - 30	FKM/PEEK
LFNA1250225H	12		Vac - 30	EPDM/PEEK
LFNA2450225H	24		Vac - 30	EPDM/PEEK

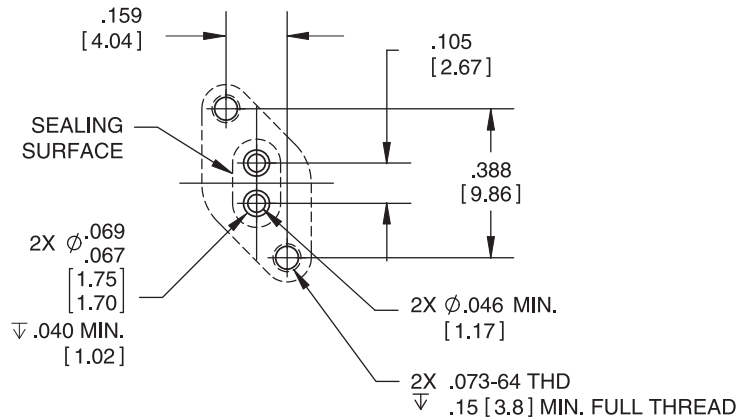
NOTE: (1) FFKM elastomer available upon request.

LFN SERIES 2-WAY MICRO INERT SOLENOID VALVE

Flange Mount



Valve Mounting Detail



Reference Drawing Number LSIX1001800A for Mounting Details

Unless otherwise specified, dimensions are in inches [mm]. Drawings are not to scale.

Standard Manifolds

PART NUMBER ¹		NUMBER OF VALVE POSITIONS	DIMENSION "A"
PEEK	PMMA		
LSMX0509700B	N/A	Manifold, 1x	0.63" (16.0 mm)
LSMX0509520B	LSMX0509560B	Manifold, 2x	0.80" (20.3 mm)
LSMX0509530B	LSMX0509570B	Manifold, 3x	1.10" (27.9 mm)
LSMX0509540B	LSMX0509580B	Manifold, 4x	1.40" (35.6 mm)
LSMX0509550B	LSMX0509590B	Manifold, 5x	1.70" (43.2 mm)

NOTE: (1) Part Numbers are for the manifold and mounting screws only. Valves are sold separately.

