

MP35N HI-BAR® FLANGE MOUNT SAFETY SCREENS

The Lee Company now offers a complete line of flange mount, HI-BAR® Safety Screens made entirely of MP35N, a nickel-cobalt based alloy. Compliant with NACE MR0175/ISO 15156, these screens are specifically designed to offer exceptional corrosion resistance and extreme strength for harsh duty applications found in the oil and gas industries. Their robust, single piece construction enables these screens to withstand pressure differentials up to 7500 psi without rupture.

The excellent resistance to crevice corrosion and stress corrosion cracking of these MP35N safety screens make them not only ideal for the oil and gas industries, but also for use in other hostile environments found in marine, medical, chemical and food processing applications.

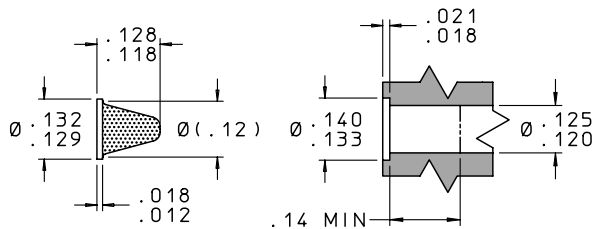
- Rugged, one piece design made entirely of MP35N
- Material compliant with NACE MR0175/ISO 15156
- Burst/Collapse Pressure: 7500 psid (min.)
- 48 standard versions for design flexibility
- Hole sizes from 0.002" to 0.020"
- Custom designs available



The MP35N HI-BAR Safety Screens are available in 6 different flange sizes and 8 different hole sizes, ranging from 0.002" to 0.020" in diameter. All Lee Safety Screens are precision cleaned and packaged before shipment.

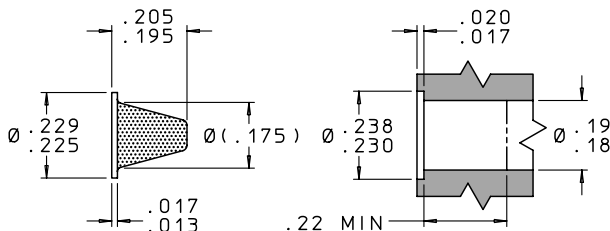
Special designs are available upon request. Contact your local Lee Sales Engineer for additional information or technical assistance.

130 FLANGE MOUNT SCREEN



LEE PART NUMBER	HOLE SIZE (in.)	HOLE SIZE (µm)	OPEN AREA (in. ²)	TOTAL AREA (in. ²)	NUMBER OF HOLES	BURST / COLLAPSE PRESSURE (psid min.)	Rob** NUMBER	LOHM* RATE (nom.)
FSHF1301005A	0.002	50	0.002	0.02	630	7500	0.06	500
FSHF1301007A	0.003	75	0.002	0.02	370	7500	0.14	350
FSHF1301010A	0.004	100	0.003	0.02	200	7500	0.2	350
FSHF1301015A	0.006	150	0.003	0.02	110	7500	0.6	350
FSHF1301020A	0.008	200	0.003	0.02	45	7500	0.8	300
FSHF1301025A	0.010	250	0.003	0.02	40	7500	1.8	300
FSHF1301040A	0.015	380	0.004	0.02	25	7500	7.3	250
FSHF1301050A	0.020	500	0.005	0.02	14	7500	16.7	200

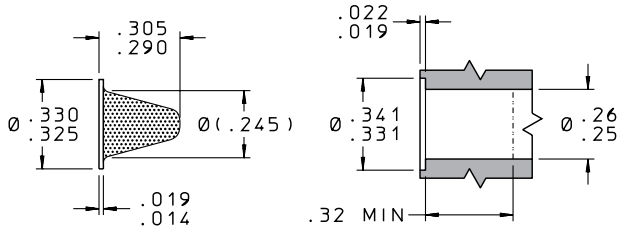
230 FLANGE MOUNT SCREEN



LEE PART NUMBER	HOLE SIZE (in.)	HOLE SIZE (µm)	OPEN AREA (in. ²)	TOTAL AREA (in. ²)	NUMBER OF HOLES	BURST / COLLAPSE PRESSURE (psid min.)	Rob** NUMBER	LOHM* RATE (nom.)
FSHF2301005A	0.002	50	0.006	0.06	1810	7500	0.2	200
FSHF2301007A	0.003	75	0.007	0.06	990	7500	0.4	120
FSHF2301010A	0.004	100	0.010	0.06	795	7500	0.8	95
FSHF2301015A	0.006	150	0.010	0.06	350	7500	1.8	95
FSHF2301020A	0.008	200	0.010	0.06	200	7500	3.4	95
FSHF2301025A	0.010	250	0.010	0.06	130	7500	6.0	95
FSHF2301040A	0.015	380	0.013	0.06	70	7500	20	90
FSHF2301050A	0.020	500	0.013	0.06	40	7500	49	90

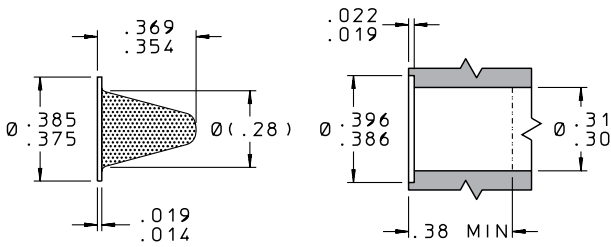
MP35N HI-BAR® FLANGE MOUNT SAFETY SCREENS

330 FLANGE MOUNT SCREEN



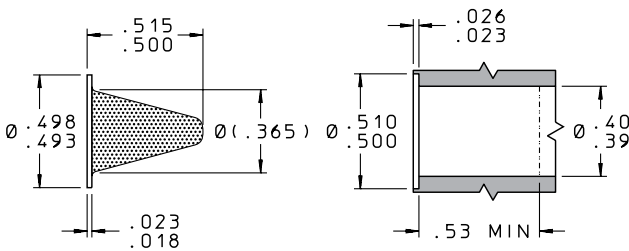
LEE PART NUMBER	HOLE SIZE (in.)	HOLE SIZE (µm)	OPEN AREA (in. ²)	TOTAL AREA (in. ²)	NUMBER OF HOLES	BURST / COLLAPSE PRESSURE (psid min.)	Rob** NUMBER	LOHM* RATE (nom.)
FSHF3301005A	0.002	50	0.012	0.12	3820	7500	0.4	65
FSHF3301007A	0.003	75	0.016	0.12	2260	7500	0.8	55
FSHF3301010A	0.004	100	0.022	0.12	1750	7500	1.9	50
FSHF3301015A	0.006	150	0.022	0.12	778	7500	4.0	45
FSHF3301020A	0.008	200	0.022	0.12	435	7500	7.4	45
FSHF3301025A	0.010	250	0.022	0.12	280	7500	13	45
FSHF3301040A	0.015	380	0.028	0.12	158	7500	46	45
FSHF3301050A	0.020	500	0.028	0.12	90	7500	107	45

380 FLANGE MOUNT SCREEN



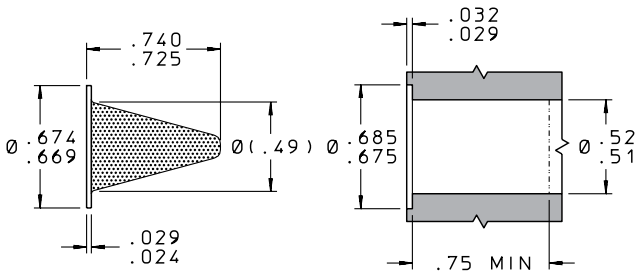
LEE PART NUMBER	HOLE SIZE (in.)	HOLE SIZE (µm)	OPEN AREA (in. ²)	TOTAL AREA (in. ²)	NUMBER OF HOLES	BURST / COLLAPSE PRESSURE (psid min.)	Rob** NUMBER	LOHM* RATE (nom.)
FSHF3801005A	0.002	50	0.017	0.17	5415	7500	0.5	55
FSHF3801007A	0.003	75	0.022	0.17	3110	7500	1.2	45
FSHF3801010A	0.004	100	0.031	0.17	2465	7500	2.6	35
FSHF3801015A	0.006	150	0.031	0.17	1095	7500	5.6	30
FSHF3801020A	0.008	200	0.031	0.17	616	7500	10	30
FSHF3801025A	0.010	250	0.031	0.17	395	7500	18	30
FSHF3801040A	0.015	380	0.038	0.17	245	7500	71	30
FSHF3801050A	0.020	500	0.038	0.17	120	7500	143	30

495 FLANGE MOUNT SCREEN



LEE PART NUMBER	HOLE SIZE (in.)	HOLE SIZE (µm)	OPEN AREA (in. ²)	TOTAL AREA (in. ²)	NUMBER OF HOLES	BURST / COLLAPSE PRESSURE (psid min.)	Rob** NUMBER	LOHM* RATE (nom.)
FSHF4951005A	0.002	50	0.03	0.32	10 200	7500	1.0	25
FSHF4951007A	0.003	75	0.04	0.32	5660	7500	2.1	25
FSHF4951010A	0.004	100	0.06	0.32	4775	7500	5.1	20
FSHF4951015A	0.006	150	0.06	0.32	2120	7500	11	20
FSHF4951020A	0.008	200	0.06	0.32	1190	7500	20	20
FSHF4951025A	0.010	250	0.06	0.32	765	7500	34	20
FSHF4951040A	0.015	380	0.07	0.32	395	7500	115	20
FSHF4951050A	0.020	500	0.07	0.32	225	7500	268	20

670 FLANGE MOUNT SCREEN



LEE PART NUMBER	HOLE SIZE (in.)	HOLE SIZE (µm)	OPEN AREA (in. ²)	TOTAL AREA (in. ²)	NUMBER OF HOLES	BURST / COLLAPSE PRESSURE (psid min.)	Rob** NUMBER	LOHM* RATE (nom.)
FSHF6701005A	0.002	50	0.06	0.62	19 750	7500	1.9	15
FSHF6701007A	0.003	75	0.08	0.62	11 315	7500	4.2	15
FSHF6701010A	0.004	100	0.11	0.62	8755	7500	9.3	10
FSHF6701015A	0.006	150	0.11	0.62	3890	7500	20	10
FSHF6701020A	0.008	200	0.11	0.62	2190	7500	37	10
FSHF6701025A	0.010	250	0.11	0.62	1400	7500	63	10
FSHF6701040A	0.015	380	0.14	0.62	790	7500	230	10
FSHF6701050A	0.020	500	0.14	0.62	445	7500	530	10

* The Lohm is a measure of flow resistance. Example: One Lohm will permit a flow of 100 GPM of water at 25 psid at 80°F.

** The ROB Number indicates the relative resistance to blockage when comparing one screen to another. The higher the ROB Number, the greater the resistance to blockage.

Additional information can be found at www.TheLeeCo.com or by contacting your local Lee Sales Engineer.